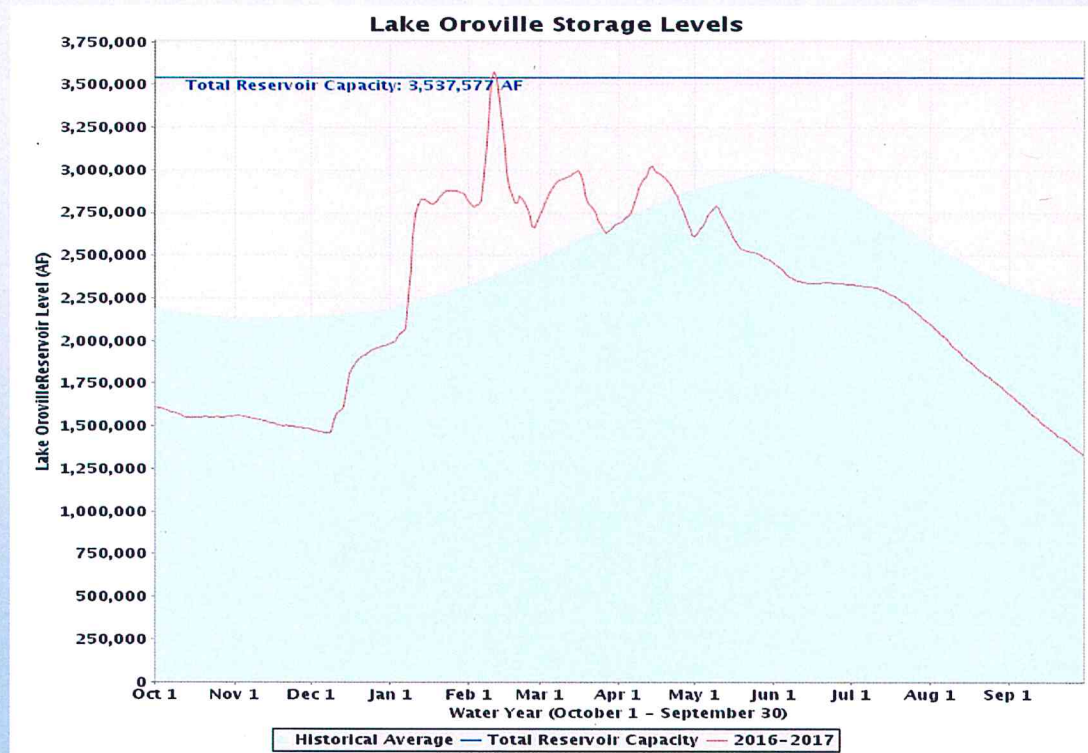


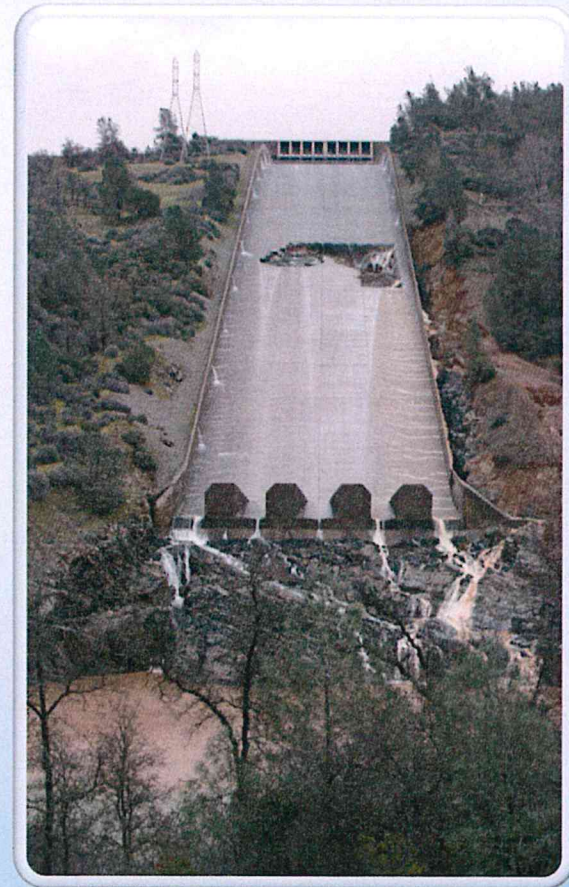
OROVILLE SPILLWAY REPAIRS

OCTOBER 2017

OROVILLE GAINS 2.5 MILLION ACRE FEET IN 5 WEEKS

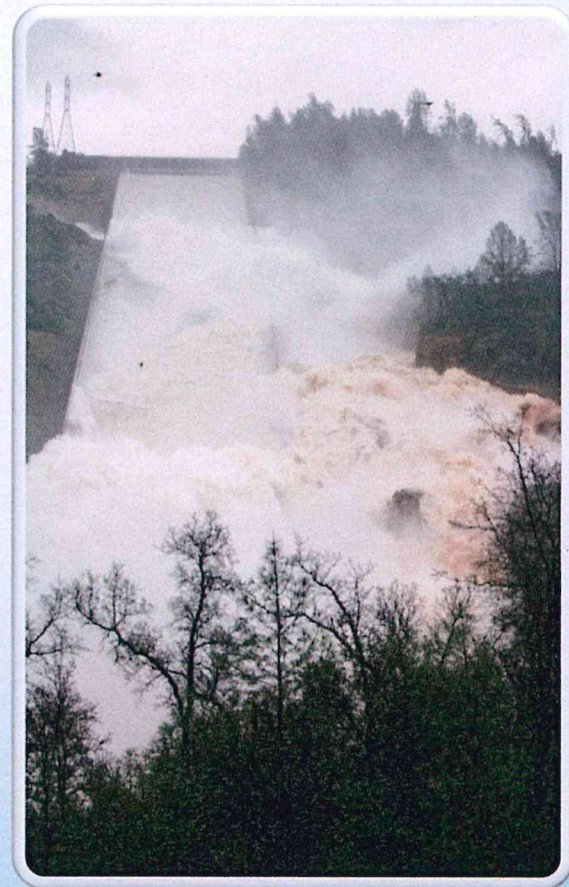


FEBRUARY 7TH 2017
MAIN SPILLWAY SHUT OFF FOR
INSPECTION AFTER DISCOVERY OF
DAMAGE



FEBRUARY 8TH

DWR TESTS WATER RELEASES THROUGH
DAMAGED MAIN SPILLWAY AT 20,000 CFS
AND LATER INCREASES IT TO 35,000 CFS ON
THE 9TH AND FINALLY UP TO 65,000 ON
FEBRUARY 10TH DUE TO PENDING STORMS



FEBRUARY 11TH

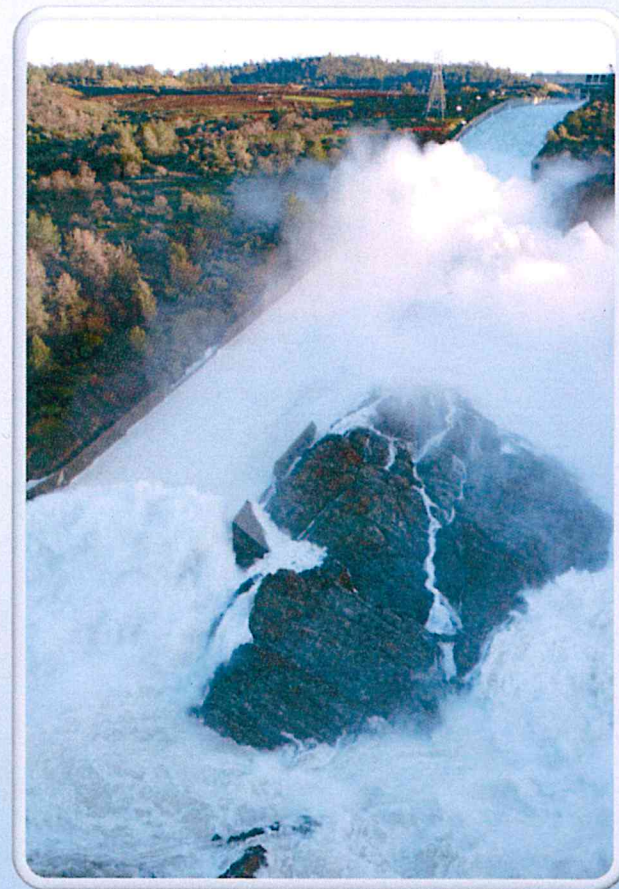
AS THE LAKE SURFACE ELEVATION REACHES 901 FEET
AT 8 AM THE EMERGENCY SPILLWAY BEGINS SPILLING
WATER FOR THE FIRST TIME SINCE IT WAS COMPLETED
IN 1968



FEBRUARY 11TH

EROSION TO DAMAGED SECTION AND ADJOINING HILLSIDE
CONTINUES AS WATER SURFACE ELEVATION RISES DUE TO
STORM SURGE INFLOWS

LAKE OROVILLE PEAKS AT ELEVATION 902.59 AT 3:00 AM
NEXT MORNING

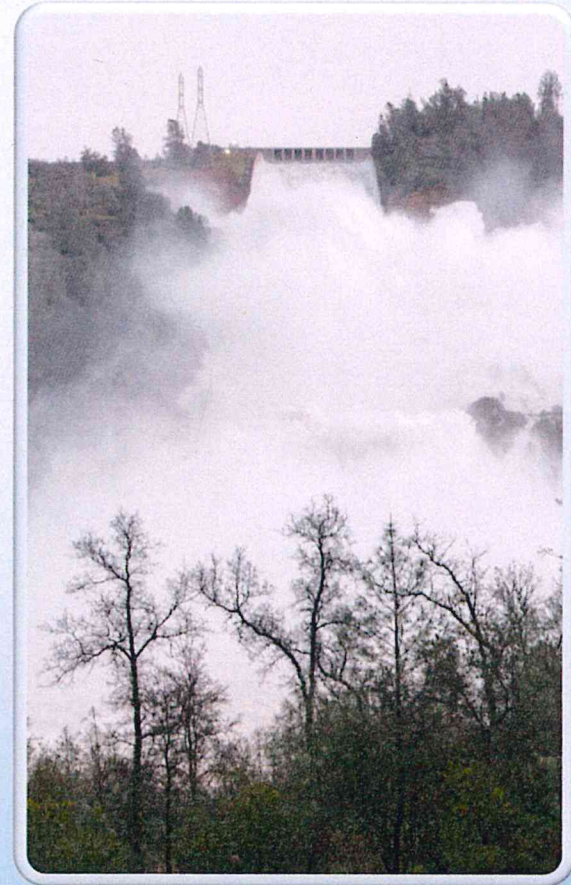


FEBRUARY 12TH

HUGE SPRAY CLOUD AS DWR OPENS UP TO RELEASE
100,000 CFS FROM THE DAMAGED SPILLWAY TO
DECREASE LAKE LEVEL BY 50 FOOT IN ORDER TO HANDLE
THE NEXT ROUND OF STORMS

MANDATORY EVACUATIONS (200,000 RESIDENTS) ARE
ORDERED BY BUTTE COUNTY SHERIFFS OFFICE AS WATER
BEGINS TO HEAD CUT AND ERODE THE BOTTOM OF THE
UNREGULATED EMERGENCY SPILLWAY

FEB.14 BUTTE CO SHERIFFS REDUCE MANDATORY
EVACUATION TO VOLUNTARY STATUS



FEBRUARY 27

DEBRIS PILE UP FROM DAMAGED SPILLWAY AND HILLSIDE EROSION LIMITING RELEASES FROM HYATT POWER PLANT DUE TO BLOCKAGE OF RELEASE WATER THROUGH THE AFTER BAY



FLows FROM MAIN SPILLWAY ARE SHUT-OFF AND REMOVAL OF SPILLWAY DEBRIS BEGINS



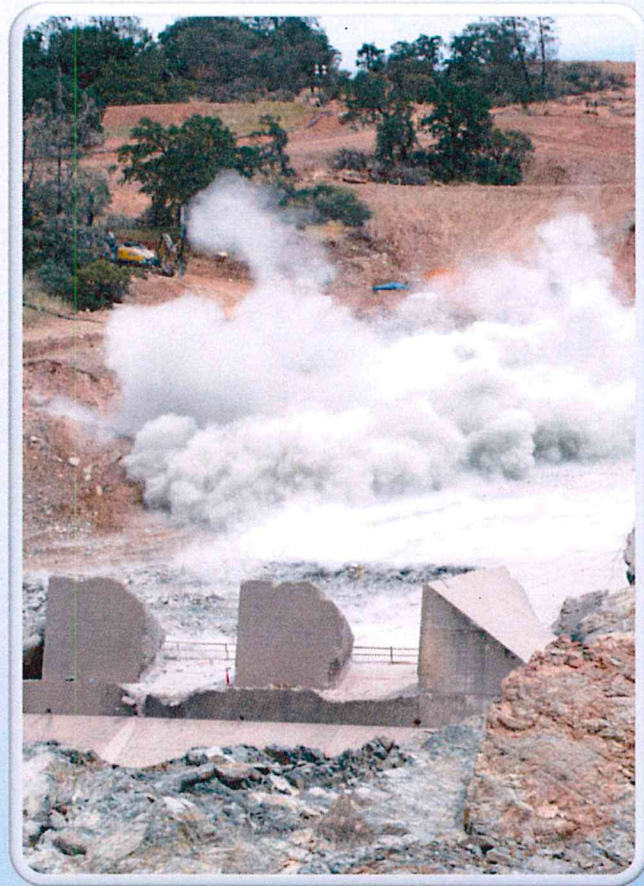
APRIL 17TH DWR AWARDS CONTRACT

KIEWIT PACIFIC INFRASTRUCTURE
WEST WINS 275 MILLION DOLLAR
30% DESIGN AND CONSTRUCT
CONTRACT TO REPAIR SPILLWAYS



**AUGUST 23 MAIN SPILLWAY
LOWER CHUTE DEMOLITION WAS
COMPLETED**

**DEMOLITION BEGAN ON APRIL 22
WITH CONTROLLED BLASTING AND
CLEARING OF THE SPILLWAY**





COMPLETED REMOVAL OF LOWER SPILLWAY SECTION



RECONSTRUCTION OF LOWER SPILLWAY

STRUCTURAL AND LEVELING CONCRETE IS PLACED NEAR THE BOTTOM OF THE LOWER CHUTE



ROLLER COMPACTED CONCRETE PLACED IN AREA OF EROSION

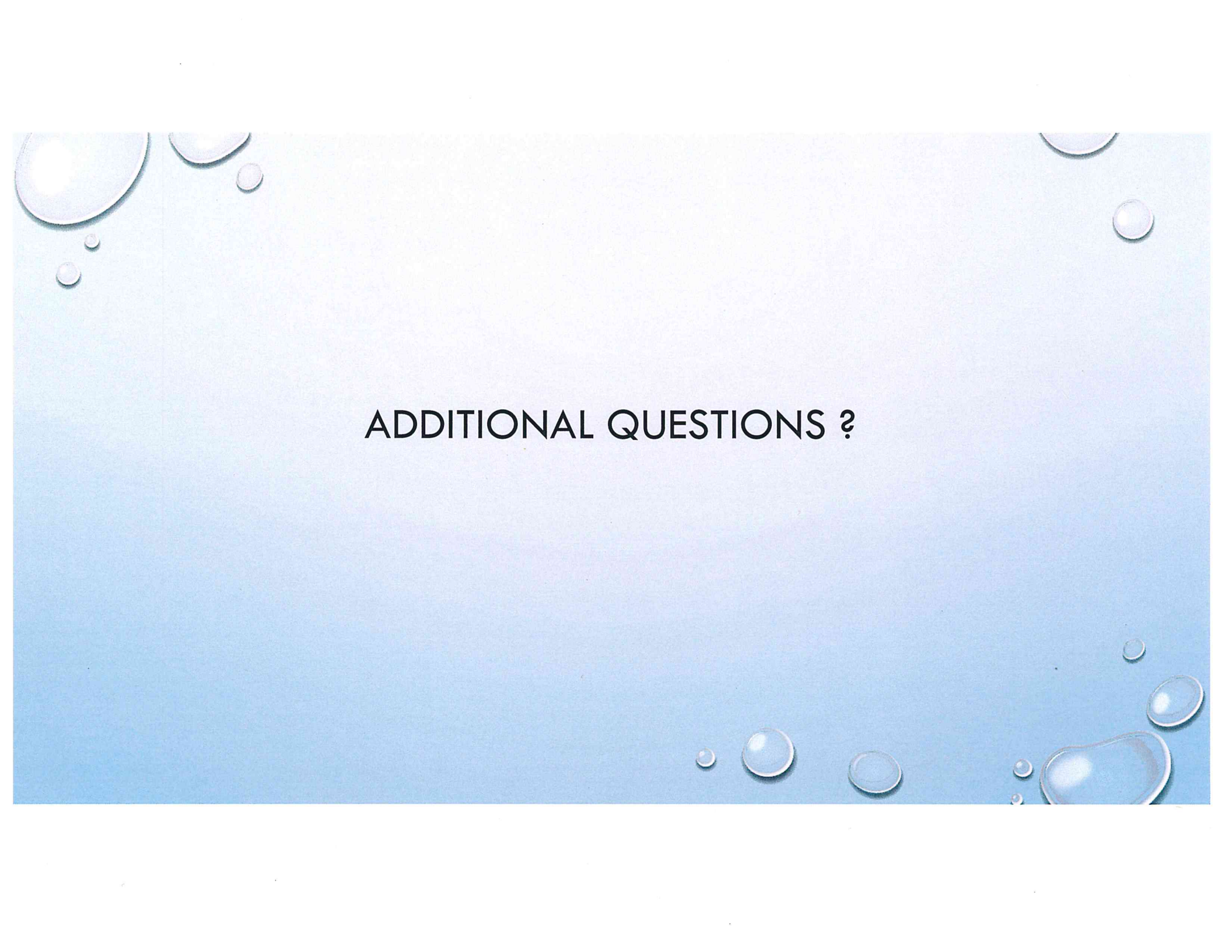
313,000 CU YARDS
ROLLER COMPACTED CONCRETE TO FILL BREACH

ANSWERS AND FACTS ON COSTS

1. REPAIRS TO THE LAKE OROVILLE SPILLWAYS WILL BE PAID FOR BY SWP CONTRACTORS PER THE LONG-TERM WATER SUPPLY CONTRACTS FOR ANY COSTS NOT RECOVERABLE FROM FEDERAL GRANTS OR OTHER SOURCES
2. DWR IS WORKING WITH THE GOVERNOR'S OFFICE OF EMERGENCY SERVICES (CAL OES) TO SECURE THE MAXIMUM REIMBURSEMENT ALLOWABLE UNDER FEMA'S DISASTER ASSISTANCE PROGRAM FOR ALL ELIGIBLE DISASTER RELATED COSTS
3. FEMA HAS REIMBURSED \$22.8 MILLION AS OF THE END OF JULY 2017 (\$8,641,755 MILLION FOR THE EMERGENCY SPILLWAY AND \$14,166,303 MILLION) FOR REMOVAL OF 2.2 MILLION YARDS OF DEBRIS AND SEDIMENT
4. DWR WILL CONTINUE TO SUBMIT REQUESTS FOR REIMBURSEMENTS FROM FEMA REGARDING THE LAKE OROVILLE SPILLWAYS INCIDENT. THIS FIRST PAYMENT IS ENCOURAGING AND DWR VALUES THE PARTNERSHIP WITH FEMA AND CAL OES AND LOOK FORWARD TO WORKING TOGETHER.
5. TOTAL UNREIMBURSED COSTS ARE UNKNOWN AT THIS TIME

2017 2018 OPERATIONS

1. THE LAKE'S ELEVATION WILL BE DRAWN DOWN TO 700 FEET BY NOVEMBER 1, 2017, PROVIDING 2.5 MAF OF STORAGE. THIS LAKE LEVEL WILL PROVIDE ADEQUATE CAPACITY IN THE RESERVOIR IF NORTHERN CALIFORNIA EXPERIENCES UNUSUALLY EARLY HEAVY FALL STORMS IN LATE FALL AND EARLY WINTER OF 2017.
2. THE LOWER LAKE LEVEL, COMBINED WITH OPERATIONAL CONTINGENCIES, SHOULD ALLOW DWR TO KEEP RELEASES FROM THE MOSTLY RECONSTRUCTED MAIN SPILLWAY AT 100,000 CUBIC-FEET PER SECOND (CFS) OR LESS OVER THE WINTER AND ENSURE LAKE LEVELS REMAIN BELOW 901 FEET, THE LEVEL THAT WOULD REQUIRE USE OF THE EMERGENCY SPILLWAY, WHICH IS STILL UNDERGOING CONSTRUCTION.
3. IN THE EVENT THE RESERVOIR RISES QUICKLY DURING THE WINTER MONTHS, THE OPERATIONS PLAN IDENTIFIES CERTAIN ELEVATIONS AT WHICH DWR WILL INCREASE OUTFLOWS THROUGH THE HYATT POWERPLANT, THE RIVER VALVE OUTLETS OR THE MAIN SPILLWAY TO SAFELY MANAGE LAKE LEVELS
4. DWR WILL ASSESS THE OPERATIONS PLAN FOR THE REMAINDER OF THE YEAR IN APRIL, WHEN HYDROLOGIC AND SNOWPACK CONDITIONS ARE CLEARER, TO GUIDE OPERATIONS THROUGH THE COMPLETION OF CONSTRUCTION ON LAKE OROVILLE'S MAIN AND EMERGENCY SPILLWAYS.
5. THE IMPACT ON ALLOCATIONS AND DELIVERY SCHEDULES FOR 2018 IS UNKNOWN AT THIS TIME

The background of the slide is a light blue gradient. It is decorated with several realistic water droplets of various sizes. Some droplets are located in the top-left corner, others in the top-right, and a cluster of larger droplets is in the bottom-right corner. The droplets have highlights and shadows, giving them a three-dimensional appearance.

ADDITIONAL QUESTIONS ?