



PALMDALE WATER DISTRICT
A CENTURY OF SERVICE

IMPORTANT INFORMATION

ABOUT PWD'S 2024 RATE STUDY AND YOUR WATER RATES



WHY IS PWD CONDUCTING A RATE STUDY?

Every five years, Palmdale Water District (PWD) conducts a rate study to evaluate the water rates necessary to continue providing safe, reliable service to our customers. As mandated by Proposition 218, the analysis involves an in-depth financial review of PWD and updates the water budget rate structure to reflect new State mandated legislation for years 2025-2029. The study is conducted by an independent economic consultant.



Pipes, Pumps & Wells



New Projects



Rising Cost of Imported Water



New Regulations

INCREASED OPERATIONAL COSTS

The costs to purchase, pump, treat and deliver water are increasing at a faster rate than current revenue can support. Materials and chemical costs, for example, have risen nearly 50% and 20%, respectively.

AGING WATER SYSTEM

Costs to maintain and improve the infrastructure that supports water delivery continues to increase exponentially. PWD is replacing a 1960s booster station, updating 1990s water tanks and building two new wells, the first time in 30 years.

LOCAL WATER RELIABILITY

To build resiliency in the local water supply, PWD is investing in Pure Water Antelope Valley, the region's first advanced water purification project that could produce 4.5 million gallons of water daily, and continues to increase storage capacity at the Littlerock Dam by removing sediment.

PWD AT-A-GLANCE



Palmdale Water District has been providing high-quality water at a reasonable cost since 1918. We are proud of our exceptional customer service, advocacy for local water issues that support our population of more than 126,000, community education on water-use efficiency, and regional leadership in researching and implementing new technologies that improve operational efficiency.

6.83 BILLION GALLONS
of water produced annually

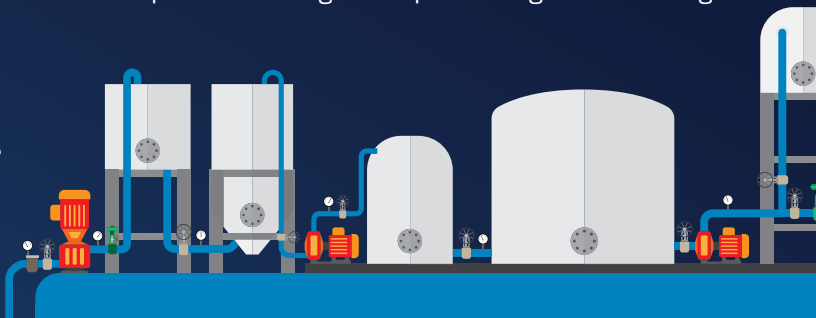
400+ MILES *of pipe*

24 WELLS

20 TANKS

2 dams and surface
water reservoirs

1 potable water
treatment plant




UNDERSTANDING BUDGET-BASED RATES

Budget-based rates promote fairness, encourage water-use efficiency, reduce demand on the water supply and reward customers who use water efficiently. Our budget-based rate structure is designed to:

 **Drive consistent water-use efficiency**

 **Cover the agency's costs to deliver water reliably**

 **Fairly and equitably allocate water based on a customer's individualized needs**

 **Meet State water-use efficiency standards**



WATER EFFICIENCY REGULATION



California passed two bills (SB 606 and AB 1668) in 2018 that are intended to support long-term conservation goals and water supply reliability. The new regulations increase costs for water agencies by requiring districts to:

- ▶ Establish water-use efficiency goals
- ▶ Meet new reporting requirements
- ▶ Replace aging pipes and mains to prevent leaks
- ▶ Update drought plans and conduct tests to ensure water service continuity
- ▶ Face penalties for violations

PURE WATER DEMONSTRATION FACILITY

Moving one step closer toward a cost-effective and more reliable high-quality water supply, PWD recently broke ground on its Pure Water Antelope Valley (AV) Demonstration Facility. The facility will purify recycled water for potable use, helping the State achieve its recycled water targets while generating data to inform future carbon capture and brine disposal technologies. Expected to be completed in one year for \$24.5 million, the facility will use state-of-the-art procedures

that remove more than 99.99 percent of bacteria, viruses and ions like salt. Pure Water AV will be the first advanced water treatment plant in California to house “Project Monarch,” a water management and carbon capture equipment supplied by Capture6 — a climate technology and services company. The Demonstration Facility is required by the State before PWD can build the full-scale project.



PROPOSED WATER BUDGET ALLOCATIONS

Each customer currently receives a water budget for indoor and outdoor use that considers individual factors such as the number of people in the household, size of irrigable outdoor landscape, weather and State efficiency standards. However, new allocations are being considered to reflect more accurate landscape data and new State standards.

Customers with special circumstances can request a larger water budget. Exceptions are made for larger households (more than four residents per single-family home), in-home day care or elder care, and medical needs. A variance form is available at bit.ly/2z8BBR3.

* PWD is using data from Geographic Information System (GIS)-based aerial landscape mapping to obtain actual square footage to accurately calculate customers' outdoor water needs. The map identifies structures, hardscapes, pools, irrigated landscaping and artificial turf. If you believe your footage is inaccurate, you can request for a PWD rep to measure your landscape.

Tiers	Current Water Budget	Proposed Water Budget
TIER 1 Essential Use = Indoor Allocation	55 gallons per person per day	50 gallons per person per day (complies with new regulations)
TIER 2 Efficient Use = Outdoor Allocation	<ul style="list-style-type: none"> • Actual irrigable area - the amount of water required to maintain a healthy landscape as measured by aerial imagery* • Weather • Water supply conditions 	(No Change)

PROPOSED RATE CHANGES



FIXED CHARGES AND VARIABLE RATES

Your water bill is comprised of both fixed charges and variable rates.

FIXED CHARGE: A fixed charge, or monthly service charge, stays the same every month no matter how much water you use and is based on the size of your meter. It covers the cost of operating and maintaining the water treatment and delivery system, including water storage, water testing and meter reading.



VARIABLE RATE: Variable rates change based on how much water you use. Your bill's variable rates include commodity rates. These pay for costs that change depending on how much water is used, including the cost of imported water and electricity. Only the accounts that exceed their water budget allocations would pay the higher tier (3-4) water rates.



PROPOSED MONTHLY SERVICE CHARGE

Meter Size	Current	Proposed (2025)
5/8" - 1"	\$54.43	\$60.75
1-1/2"	\$134.37	\$150.26
2"	\$204.21	\$229.94



COMMODITY RATES

The commodity rate is based on the amount of water that flows through a customer's meter. It changes each billing cycle, depending on the amount of water used. The commodity rate is metered in hundred cubic feet (hcf) units, with one unit equal to 748 gallons.

COMMODITY RATES (\$/HCF)

Tiers	Current Rate (2024)	% of water budget allocation	Proposed Rate (2025)	Proposed % of water budget allocation (2025)
Essential Use Tier 1	\$1.08	0 - 100% Essential Allocation	\$1.31	(No Change)
Efficient Use Tier 2	\$1.98	101% Essential Allocation - 100% Efficient Allocation	\$2.64	(No Change)
Tier 3	\$2.54	101% - 130% Total Allocation	\$3.96	101% - 150% Total Allocation
Tier 4	\$4.23	131% - 160% Total Allocation	\$4.98	151% and Above Total Allocation
Tier 5	\$6.23	161% - 190% Total Allocation	(Not Applicable)	(Not Applicable)

PUBLIC HEARING ON POTENTIAL CHANGES TO WATER RATES

DATE: Monday, November 4, 2024

TIME: 6 p.m.

LOCATION: Palmdale Water District
Board Room • 2029 East Avenue Q, Palmdale

The public is encouraged to attend the hearing where the PWD Board of Directors will discuss and vote on the proposed changes to water rates. *If you have questions or comments about the proposed rates, you can:*



CALL OR VISIT. The rate study and other information on the proposed adjustments are available for review at Palmdale Water District and on our website: www.palmdalewater.org. For more information or assistance, call **661-947-4111**.



WRITE. Written protests may be delivered in person or mailed to PWD at **2029 East Avenue Q, Palmdale, CA 93550**.



ATTEND THE PUBLIC HEARING. All members of the public will have an opportunity to speak and give testimony regarding the proposed rate changes.

By law, property owners and customers of record may submit a written protest to the proposed rate changes. Protests must be received before the conclusion of the public hearing.



**GET
INVOLVED**

COMMUNITY WORKSHOPS

COMMUNITY WORKSHOP 1 - VIRTUAL

Monday, October 7, 2024
5 - 6 p.m.

Zoom link: <https://us02web.zoom.us/j/81332637220?pwd=VHj5308vLxClL4lfm75aAuQDyFXCYe.1>

OR

Call 1-669-444-9171
Meeting ID: 813 3263 7220
Passcode: 381108

COMMUNITY WORKSHOP 2

Wednesday, October 23, 2024
5 - 6:30 p.m.

Palmdale Water District
2029 East Avenue Q, Palmdale

A VALID PROTEST MUST:

- Be in writing
- State opposition to the proposed water rate increase
- Include the location of owner's parcel by County Assessor's Parcel Number (APN) or by the parcel's street address
- Be mailed or delivered to PWD
- Be received before the end of the public hearing



REBATES AND WATER-USE EFFICIENCY PROGRAMS

REBATES: RESIDENTIAL & COMMERCIAL



TOILET: Save up to 15 gallons of water each day with a high-efficiency toilet (HETs) or a dual flush toilet



HOT WATER RECIRCULATING PUMP: Receive \$125 for installing the water-saving tool that circulates hot water in pipes



HIGH EFFICIENCY CLOTHES WASHER: Reduce energy costs by 50% while saving water



WEATHER-BASED IRRIGATION CONTROLLER: Water Sense labeled controllers qualify for a \$150 rebate

WATER-USE EFFICIENCY: PROGRAMS



**RESIDENTIAL WATER SURVEY
(REDUCE WATER WASTE)**



**WATER-WISE LANDSCAPE CONVERSION
PROGRAM (TURF REMOVAL REBATE)**

SCAN TO
VIEW ALL
REBATES

