



PALMDALE WATER DISTRICT  
A CENTURY OF SERVICE

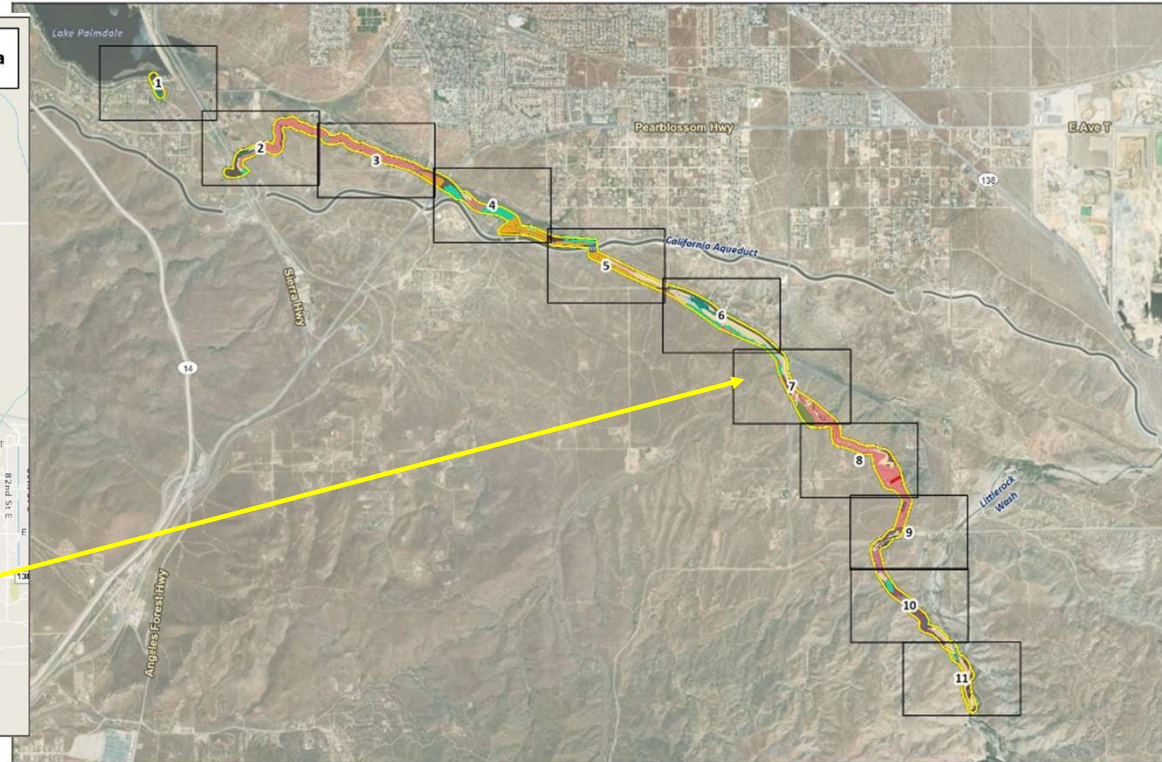
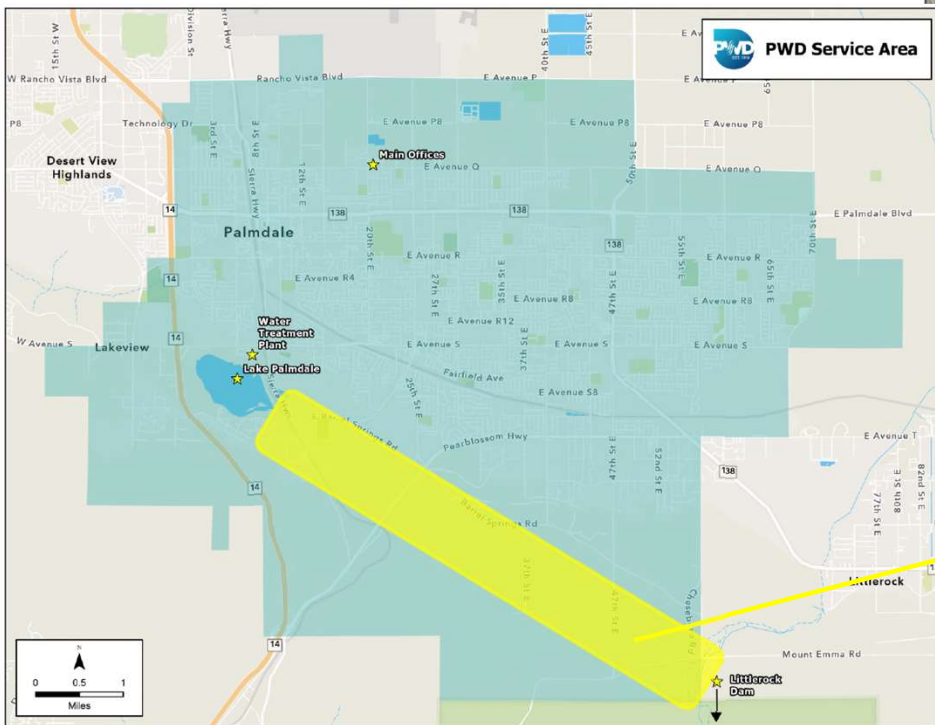
# ENVIRONMENTAL CREDITS PURCHASE FOR THE CONSTRUCTION OF THE PALMDALE DITCH CONVERSION PROJECT

Board of Directors Meeting  
March 24, 2025

Shadi Bader, P.E., PMP, CCM  
Engineering Manager



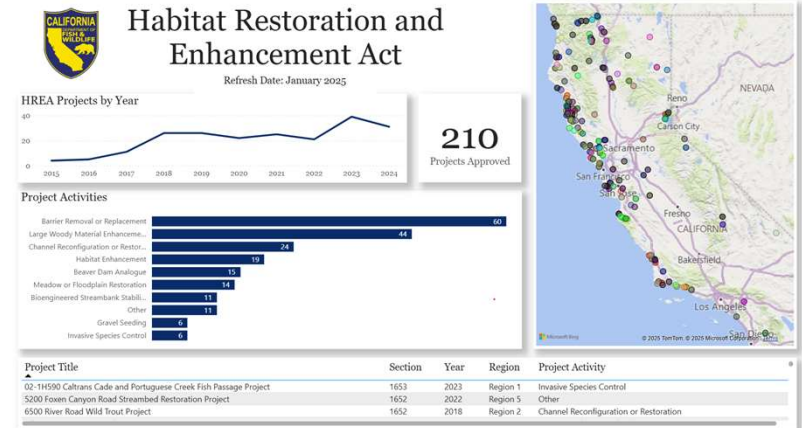
# Location Map



**PALMDALE WATER DISTRICT**  
A CENTURY OF SERVICE

# Project Needs

- Existing Palmdale Ditch is a 7.2-mile ditch originally constructed in 1880's. Project will replace the ditch with a pipeline
- Habitat Impacted:
  - 8.64 acres of CDFW-jurisdictional streambed & riparian habitat
  - 2.92 acres of Lahontan RWQCB-jurisdictional wetland & non-wetland waters
  - Total Impacted: 11.56 acres
- Credits to be purchased:
  - CDFW: 8.72 acres and RWQCB: 5.77 acres
  - Total of 14.49 acres



# Negotiated Credits Breakdown

## CDFW Streambed and Wetland/Riparian Credits

SB0

### Restoration Credits

1600 Alluvial Floodplain Re-established  
 1600 Alluvial Floodplain Rehabilitated  
 1600 Seasonal Wetland Rehabilitated

### Acreage

7.42  
 1.05  
 0.17

**Restoration Credits Subtotal**

8.64

### Enhancement Credits

1600 Freshwater Marsh Enhanced

0.08

**Enhancement Credits Subtotal**

0.08

**Total**

**8.72**

## RWQCB Porter-Cologne Wetland and Non-Wetland Waters Credits

### PC Credit Type

Freshwater Marsh Uniform Re-establishment  
 Seasonal Wetland Upland Buffer Preserved

### Acreage

0.07  
 5.70

**Total**

**5.77**

**Grand Acreage Total**

**14.49**

**Total Cost**

**\$3,747,000**





# Petersen Ranch Mitigation Bank

- Total cost is \$3,747,000 for 14.49 ac.
- A down payment of \$1,125,000 as a deposit upon the execution of the reservation agreement.
- 10.89 ac available now & 3.60 ac will be available after December 1, 2025, Phase 5 Credit Release.
- Within 30 days following USACE and CDFW approval of the Phase 5 Credit Release, District to pay remaining balance of \$2,622,000.
- The bank is an approved conservation bank that provides habitat credits for projects affecting wetland and riparian ecosystems.



**PALMDALE WATER DISTRICT**  
A CENTURY OF SERVICE

# Recommendation

Staff recommends that the Board of Directors authorize staff to enter into an agreement with Petersen Ranch Mitigation Bank to purchase environmental credits to support the construction of the Palmdale Ditch Conversion Project in the amount of \$3,747,000.

